

Slender Loris Species

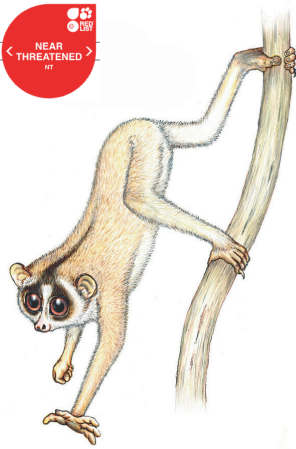


Slow Loris
Outreach Week



LORIS ID POCKET GUIDE

(*Nycticebus* spp., *Loris* spp. & *Xanthonycticebus* spp.)



Grey Slender Loris
Loris lydekkerianus

Southeast India, Sri Lanka
Dry Zone

Characteristics:
228 – 294 g

Grayish buff dorsal colour often with white frosting, creamy ventrum, usually a dark dorsal stripe depending on subspecies, rounded muzzle, pointed circumocular patches.



Red Slender Loris
Loris tardigradus

Southern Sri Lanka Wet Zone

Characteristics:
85 – 170 g

Red brown with or without a dorsal stripe, with yellowish ventral hair. Pointy muzzle and rounded circumocular patches.



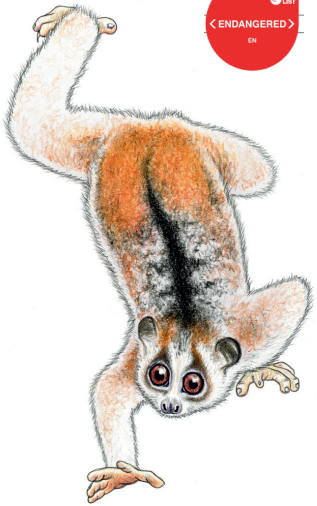
Malabar Grey Slender Loris
Loris malabaricus

South and Southwest India

Characteristics:
180 – 270 g

Red brown pelage without white frosting on the dorsum or head; dorsal stripe absent or indistinct; very round face and relatively large eyes to face.

Pygmy Loris Species



Northern Pygmy Loris
Xanthonycticebus intermedius

Northern Vietnam, northern Laos and southern China

Characteristics:
350 – 470 g dry season
450 – 580 g wet season
Relatively smaller skull and muzzle length leading to rounder face; reddish buff hair with dorsal stripe present seasonally; significant seasonal colour variation; relatively longer thicker pelage than Southern form.



Southern Pygmy Loris
Xanthonycticebus pygmaeus

Southern Vietnam, southern Laos, southern China and eastern Cambodia

Characteristics:
320 – 520 g
Minor seasonal variation in pelage colour. Crown orange and diffuse to ears with eye patches meeting crown with a barely visible point. Naked black ears and shorter fur and longer pointier face than Northern form.



Editor: Prof. Anna Nekaris, Esther Adinda, Katey Hedger

Illustrations:
Stephen D. Nash



Slow Loris
Outreach Week



Slow Loris Species



Javan Slow Loris
Nycticebus javanicus

Java (Indonesia)

Characteristics:
850 – 1050 g
Whitish nape with striped pattern, tufted ears with dark fur, dark eye fork with eye patch extending down the cheek, and a cream-coloured diamond between the eyes.



Bengal Slow Loris
Nycticebus bengalensis

India, Myanmar, Bhutan, China, Vietnam, Cambodia, Laos & Thailand

Characteristics:
850 - 2,100 g
Considerable variation exists in body size and coat colour - white to crimson red; absence of head forks to possession of light head forks.



Bangka Slow Loris
Nycticebus bancanus

Bangka Belitung Islands (Indonesia)

Characteristics:
500 – 700 g
Medium-sized species, scarlet red pelage, hairy ears, light mask on face.



Philippine Slow Loris
Nycticebus menagensis

The Philippines, Sabah & Kalimantan (Borneo)

Characteristics:
450 – 650 g
White muzzle, eyes ringed in black, ears concealed in fur, yellow to light brown crown, faint head markings and dorsal stripe.



Bornean Slow Loris
Nycticebus borneanus

Kalimantan (Borneo)

Characteristics:
600 – 850 g
Dark contrasting facemask, crown patch is often round but sometimes a band, hairy ears, pelage is long and fluffy.



Greater Slow Loris
Nycticebus coucang

Malaysia, Sumatra (Indonesia) & Singapore

Characteristics:
635 – 850 g
Short muzzle, greyish nape, reddish/brownish crown that tends to diffuse near its ears, but meets its eye patch at a point.



Sumatran Slow Loris
Nycticebus hilleri

Northern Sumatra (Indonesia)

Characteristics:
650 – 790 g
Smooth red brown coat, dark black ring around the eyes, crown is diffused with rounded forks above the eyes, short dorsal stripe.



Kayan Slow Loris
Nycticebus kayan

Sabah, Sarawak, Kalimantan (Borneo)

Characteristics:
500 – 700 g
Fluffy coat and a greyish nape, dark contrasting facemask reaching lower jaw, diffused crown patch, hairy ears.