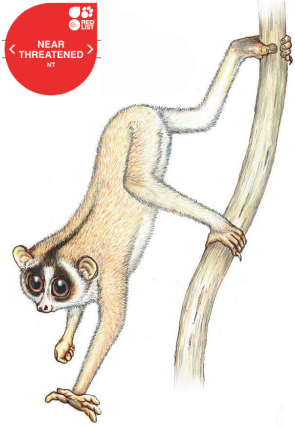


# Slender Loris Species



**Grey Slender Loris**  
*Loris lydekkerianus*

Southeast India, Sri Lanka  
Dry Zone

Characteristics:  
228 – 294 g

Grayish buff dorsal colour often with white frosting, creamy ventrum, usually a dark dorsal stripe depending on subspecies, rounded muzzle, pointed circumocular patches.



**Red Slender Loris**  
*Loris tardigradus*

Southern Sri Lanka Wet Zone

Characteristics:  
85 – 170 g

Red brown with or without a dorsal stripe, with yellowish ventral hair. Pointy muzzle and rounded circumocular patches.



**Malabar Grey Slender Loris**  
*Loris malabaricus*

South and Southwest India

Characteristics:  
180 – 270 g

Red brown pelage without white frosting on the dorsum or head; dorsal stripe absent or indistinct; very round face and relatively large eyes to face.



Slow Loris  
Outreach Week



# Pygmy Loris Species



**Northern Pygmy Loris**  
*Xanthonycticebus intermedius*

Northern Vietnam, northern Laos and southern China

Characteristics:  
350 – 470 g dry season  
450 – 580 g wet season  
Relatively smaller skull and muzzle length leading to rounder face; reddish buff hair with dorsal stripe present seasonally; significant seasonal colour variation; relatively longer thicker pelage than Southern form.



**Southern Pygmy Loris**  
*Xanthonycticebus pygmaeus*

Southern Vietnam, southern Laos, southern China and eastern Cambodia

Characteristics:  
320 – 520 g  
Minor seasonal variation in pelage colour.  
Crown orange and diffuse to ears with eye patches meeting crown with a barely visible point. Naked black ears and shorter fur and longer pointier face than Northern form.

# LORIS POCKET ID GUIDE

(*Nycticebus* spp., *Loris* spp. & *Xanthonycticebus* spp.)



Editor: Prof. Anna Nekaris,  
Esther Adinda, Katey Hedger

Illustrations:  
Stephen D. Nash



Slow Loris  
Outreach Week



# Slow Loris Species



**Javan Slow Loris**  
*Nycticebus javanicus*

Java (Indonesia)

Characteristics:  
850 – 1,050 g  
Whitish nape with striped pattern, tufted ears with dark fur, dark eye fork with eye patch extending down the cheek, and a cream-coloured diamond between the eyes.



**Bengal Slow Loris**  
*Nycticebus bengalensis*

Bangladesh, Bhutan, Cambodia, China, India, Laos, Myanmar, Thailand & Vietnam

Characteristics:  
850 - 2,100 g  
Considerable variation exists in body size and coat colour - white to crimson red; absence of head forks to possession of light head forks.



**Bangka Slow Loris**  
*Nycticebus bancanus*

Bangka Belitung Islands (Indonesia)

Characteristics:  
500 – 700 g  
Medium-sized species, scarlet red pelage, hairy ears, light mask on face.



**Philippine Slow Loris**  
*Nycticebus menagensis*

Philippines, Borneo - distribution requires ground truthing

Characteristics:  
450 – 650 g  
White muzzle, eyes ringed in black, ears concealed in fur, yellow to light brown crown, faint head markings and dorsal stripe.



**Bornean Slow Loris**  
*Nycticebus borneanus*

Borneo - distribution requires ground truthing

Characteristics:  
600 – 850 g  
Dark contrasting facemask, crown patch is often round but sometimes a band, hairy ears, pelage is long and fluffy.



**Greater Slow Loris**  
*Nycticebus coucang*

Peninsula Malaysia, Sumatra (Indonesia), Singapore & Thailand

Characteristics:  
635 – 850 g  
Short muzzle, greyish nape, reddish/brownish crown that tends to diffuse near its ears, but meets its eye patch at a point.



**Sumatran Slow Loris**  
*Nycticebus hilleri*

Northern Sumatra (Indonesia)

Characteristics:  
650 – 790 g  
Smooth red brown coat, dark black ring around the eyes, crown is diffused with rounded forks above the eyes, short dorsal stripe.



**Kayan Slow Loris**  
*Nycticebus kayan*

Borneo - distribution requires ground truthing

Characteristics:  
500 – 700 g  
Fluffy coat and a greyish nape, dark contrasting facemask reaching lower jaw, diffused crown patch, hairy ears.